

Schedule

Public engagement throughout project



Construction preview

Construction is expected to begin in 2021 and continue through 2024. Likely impacts include:

- Lane and interchange ramp closures on OR 217
- Construction noise
- Lane closures on some local roads

ODOT is committed to keeping you informed. We will share progress and respond to questions with tools including:

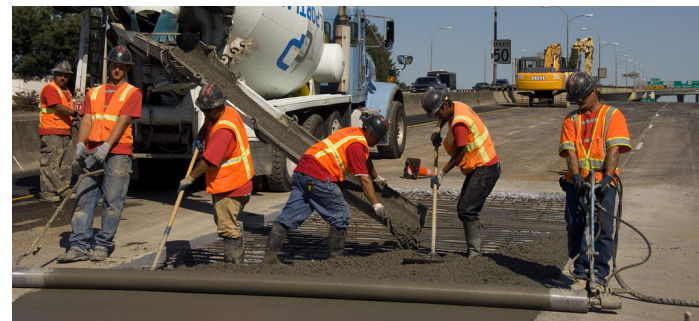
- Email newsletters
- Direct outreach to nearby neighborhoods and businesses
- Updates to www.tripcheck.com for lane closures
- Construction hotline
- Website updates at www.hwy217.org

Sound walls

Our noise study found that sound walls could help reduce highway noise for project neighbors along four sections of OR 217. A majority of residents and property owners who would benefit from these sound walls voted in favor of building each sound wall in fall 2019. Construction will take place between 2021-2024.

Funding

These safety improvements are primarily funded via the 2017 Keep Oregon Moving legislation.



Stay Informed

ODOT will continue to share information, gather feedback and answer questions. Please stay involved to learn about design progress, public meetings and future construction impacts.

VISIT the project website at www.hwy217.org

SIGN UP to receive email alerts on the project website

CONTACT ODOT directly: Lili Boicourt, ODOT Community Affairs

Phone: 503-731-8247 **Email:** Lili.D.Boicourt@odot.state.or.us

¿Habla español? Podemos proveer la información en esta publicación en español. Para recibir la información en español por favor llame (503) 731-4128.

For Americans with Disabilities Act (ADA) or Civil Rights Title VI accommodations and/or translation/interpretation services, (503) 731-4128, TTY (800) 735-2900 or Oregon Relay Service 7-1-1.



OR 217 AUXILIARY LANES

Improving safety and travel reliability

January 2020

The OR 217 Auxiliary Lanes Project will improve safety and help prevent bottlenecks on a four-mile stretch of OR 217 between Beaverton-Hillsdale Highway and OR 99W. Adding new auxiliary lanes, or on-ramp to off-ramp connections, reduces merging slow-downs and gives drivers more time to make lane changes. The project will also add a new frontage road, replace a major bridge structure and add strategic bicycle and pedestrian improvements.

What does this mean for drivers?

Drivers making local trips can avoid merging into highway traffic and instead use the new auxiliary lanes to reach their destinations. This also reduces bottlenecks for drivers already on the highway. See the map inside for more details about which interchanges will be connected by the new auxiliary lanes.

Project need

OR 217 between Beaverton and Tigard has 10 interchanges in just over seven miles and some of the shortest merging spacing in the region. The interchange spacing, combined with 120,000 vehicles a day, leads to high crash rates and travel delays. The interchanges at Allen Boulevard and Denney Road are some of the worst bottleneck locations. This project will help minimize bottlenecks and help everyone on OR 217 get where they need to go.



Project benefits

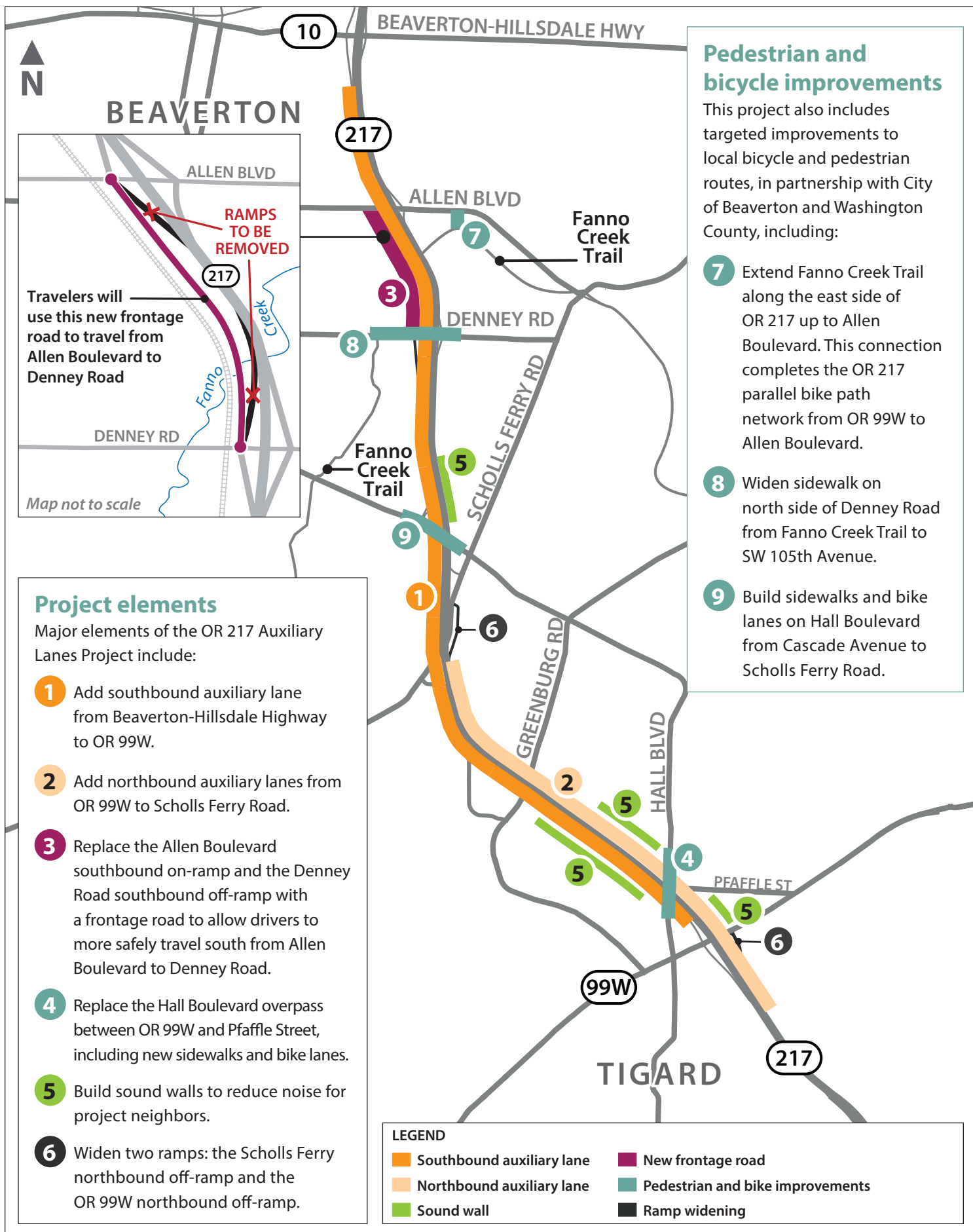
- The addition of new auxiliary lanes help prevent bottlenecks that cause congestion and crashes, which create delays for travelers and freight.
- A new frontage road for southbound drivers connecting Allen Boulevard and Denney Road will make local trips safer and easier.
- New pedestrian and bicycle improvements enhance local neighborhoods and expand routes for pedestrians and people on bikes.

SEE INSIDE
for more details

Learn more by visiting the project website at www.hwy217.org



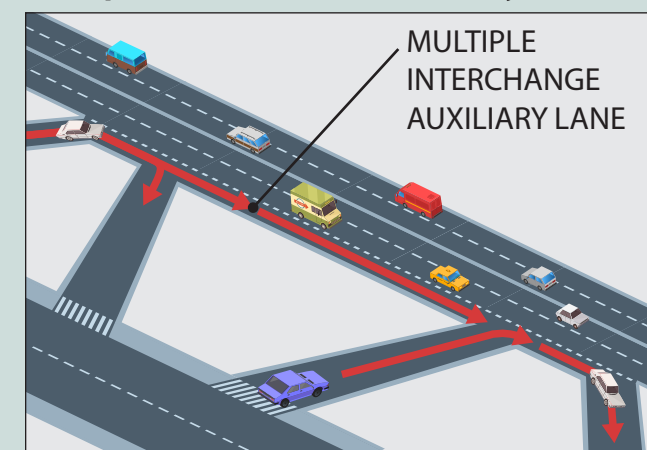
Project map



What are auxiliary lanes and how will they improve travel on OR 217?

Auxiliary lanes separate the slower vehicles entering or exiting the highway from higher speed vehicles continuing to drive along the highway. They allow for more stable flow of traffic at interchanges. ODOT expects the project to reduce the number of crashes in the area by separating the weaving and merging lane from the rest of the highway.

Example illustration of an auxiliary lane



NOT TO SCALE: For illustrative purposes only.

Details about new auxiliary lanes on OR 217

Southbound travelers:

- A fully-connected auxiliary lane from Beaverton-Hillsdale Highway to OR 99W will allow drivers to cross multiple interchanges without merging into OR 217 traffic.
- A new frontage road between Allen Boulevard and Denney Road allows drivers to bypass OR 217 entirely.

Northbound travelers:

- A new auxiliary lane will connect OR 99W to Greenburg Road.
- A second auxiliary lane will continue past OR 99W all the way to Scholls Ferry Road, allowing drivers to cross multiple interchanges without merging into OR 217 traffic.

